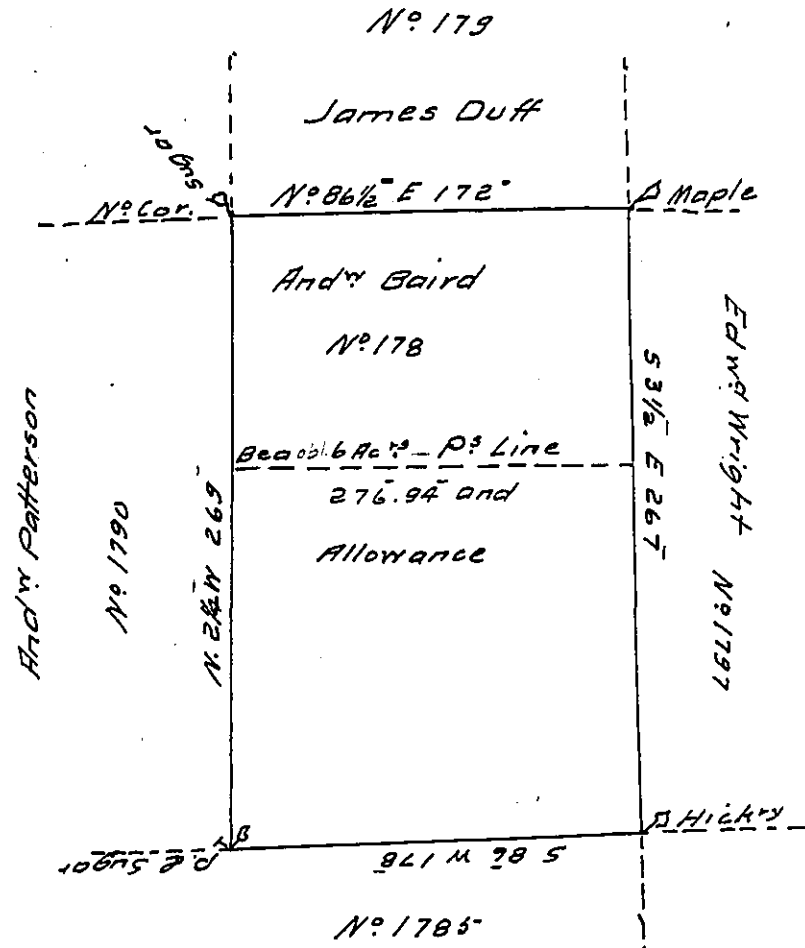


111



Situate in Mercer and Beaver Counties containing two hundred seventy six Acres 94 perches and Allowance &c. Surveyed ^{W.O.} Feb^y 1815, on the Actual Settlement and improvement of the said Andr^y Baird, and an Act of Assembly pass'd the 26th of March 1813 for the disposal of the undrawn Donation Land

Jos. Asheton

Dep^y Surv^r M.C.

Note The N. and S. lines of the east side of Baird's tract continues with the same course down to a W.O. & Sugar. No offset found. Near the East Corner. Rich^d T. Leech Esqr.

Surveyor General.

IN TESTIMONY that the above is a copy of the original remaining on file in the Department of Internal Affairs of Pennsylvania, made conformably to an Act of Assembly approved the 16th day of February, 1833, I have hereunto set my Hand and caused the Seal of said Department to be affixed at Harrisburg, this fourteenth day of December 1916.

Henry Houck

Secretary of Internal Affairs.